



# Monitoring Dell PowerConnect Ethernet Switches Using Dell SupportAssist

Dell Product Group Services  
December 2013

THIS WHITE PAPER IS FOR INFORMATIONAL PURPOSES ONLY, AND MAY CONTAIN TYPOGRAPHICAL ERRORS AND TECHNICAL INACCURACIES. THE CONTENT IS PROVIDED AS IS, WITHOUT EXPRESS OR IMPLIED WARRANTIES OF ANY KIND.

© 2013 Dell Inc. All rights reserved. Reproduction of this material in any manner whatsoever without the express written permission of Dell Inc. is strictly forbidden. For more information, contact Dell.

Trademarks used in this text:

Dell™, the Dell logo, Dell Boomi™, Dell Precision™, OptiPlex™, Latitude™, PowerEdge™, PowerVault™, PowerConnect™, OpenManage™, EqualLogic™, Compellent™, KACE™, FlexAddress™, Force10™ and Vostro™ are trademarks of Dell Inc. Other Dell trademarks may be used in this document. Cisco Nexus®, Cisco MDS®, Cisco NX-OS®, and other Cisco Catalyst® are registered trademarks of Cisco System Inc. EMC VNX®, and EMC Unisphere® are registered trademarks of EMC Corporation. Intel®, Pentium®, Xeon®, Core® and Celeron® are registered trademarks of Intel Corporation in the U.S. and other countries. AMD® is a registered trademark and AMD Opteron™, AMD Phenom™ and AMD Sempron™ are trademarks of Advanced Micro Devices, Inc. Microsoft®, Windows®, Windows Server®, Internet Explorer®, MS-DOS®, Windows Vista® and Active Directory® are either trademarks or registered trademarks of Microsoft Corporation in the United States and/or other countries. Red Hat® and Red Hat® Enterprise Linux® are registered trademarks of Red Hat, Inc. in the United States and/or other countries. Novell® and SUSE® are registered trademarks of Novell Inc. in the United States and other countries. Oracle® is a registered trademark of Oracle Corporation and/or its affiliates. Citrix®, Xen®, XenServer® and XenMotion® are either registered trademarks or trademarks of Citrix Systems, Inc. in the United States and/or other countries. VMware®, Virtual SMP®, vMotion®, vCenter® and vSphere® are registered trademarks or trademarks of VMware, Inc. in the United States or other countries. IBM® is a registered trademark of International Business Machines Corporation. Broadcom® and NetXtreme® are registered trademarks of Broadcom Corporation. QLogic is a registered trademark of QLogic Corporation. Other trademarks and trade names may be used in this document to refer to either the entities claiming the marks and/or names or their products and are the property of their respective owners. Dell disclaims proprietary interest in the marks and names of others.





# Table of contents

Introduction .....	5
1 Discovery and inventory .....	6
1.1 Prerequisites .....	6
1.2 Discovery range configuration .....	6
2 Discovering PowerConnect Ethernet switches .....	9
3 Configuring SupportAssist .....	11
3.1 Default Credentials .....	11
3.2 Custom Credentials .....	12
4 Alerts in OpenManage Essentials .....	14
4.1 Alert threshold .....	14
5 Case creation and execution of the collection tool .....	16
6 Configuring periodic collection .....	17
7 Sending system logs manually (collection on demand) .....	18
Conclusion .....	18



# Introduction

Dell SupportAssist is a remote support application providing proactive support capabilities that help identify and resolve issues faster and more accurately. It integrates with Dell OpenManage Essentials, and enables transparent visibility to your server, storage, and networking infrastructure, and proactively identifies hardware failures in your IT environment.

SupportAssist is designed with automated proactive features to help streamline support process steps, maintain your systems' health, and identify hardware failures faster and more accurately.

The key features of SupportAssist include:

- Remote monitoring for critical hardware alerts.
- Automatic collection of diagnostic logs and configuration information.
- Automatic case creation and alert notifications through email.
- Proactive support from a ProSupport Engineer, who has the information required to start resolving your case immediately.

SupportAssist gives you more oversight and control over your environment without the hassle of manual processes and more time. Equipping your OpenManage Essentials server with SupportAssist is voluntary, and results in improved support, products, and services designed to meet your needs.

OpenManage Essentials interacts with supported devices that are to be monitored and receives SNMP traps. The SNMP traps are periodically retrieved as alerts by the SupportAssist client. The alerts are filtered using various policies to decide if the alerts qualify for creating a new support case or updating an existing support case.

All qualifying alerts are securely sent to the SupportAssist server hosted by Dell, for a creating a new support case or updating an existing support case. After the support case is created or updated, the SupportAssist client, runs the appropriate collection tools on the devices that generated the alerts, and uploads the log collection to Dell.

The information in the log collection is used by Dell technical support to troubleshoot the issue and provide an appropriate solution.

This technical white paper provides information about monitoring Dell PowerConnect Ethernet switches using Dell SupportAssist. The following are the high-level areas covered:

- Steps to perform discovery and inventory
- Configuring credentials in SupportAssist for PowerConnect Ethernet switches
- Alert processing
- Case creation in SupportAssist for an alert
- Sending system logs manually



# 1 Discovery and inventory

Discovery and inventory aids understanding of what hardware and software are installed across your organization and is the most basic step to effective systems management. Areas such as license compliance, health monitoring, security and upgrades, and migrations all require the networked hardware to be available to the System Administrator on a single console to help ease the process. OpenManage Essentials provides these capabilities to initialize the discovery and inventory process and perform required actions on these devices.

## 1.1 Prerequisites

The following are the prerequisites for performing discovery and inventory:

**Credentials:** The discovery process in OpenManage Essentials communicates with the PowerConnect Ethernet switches using SNMP protocol. You may also be required to provide the SNMP community string during the discovery process.

**PowerConnect device setup:** There are a few settings to be performed on the managed nodes to make them discoverable over the network. For more information, see the *Making Your Environment Manageable with Dell OpenManage Essentials* technical whitepaper at [delltechcenter.com/ome](http://delltechcenter.com/ome).

**Dell OpenManage Server Administrator (OMSA):** OMSA should be installed on all the systems that are required to be managed with OpenManage Essentials.

## 1.2 Discovery range configuration

This section provides information about providing a discovery range for discovering devices in OpenManage Essentials.

- i. In OpenManage Essentials, navigate to **Manage** → **Discovery and Inventory**. The **Discovery Range Summary** page is displayed.
- ii. Under **Discovery Ranges**, right-click **All Ranges**, and click **Add Discovery Range**.



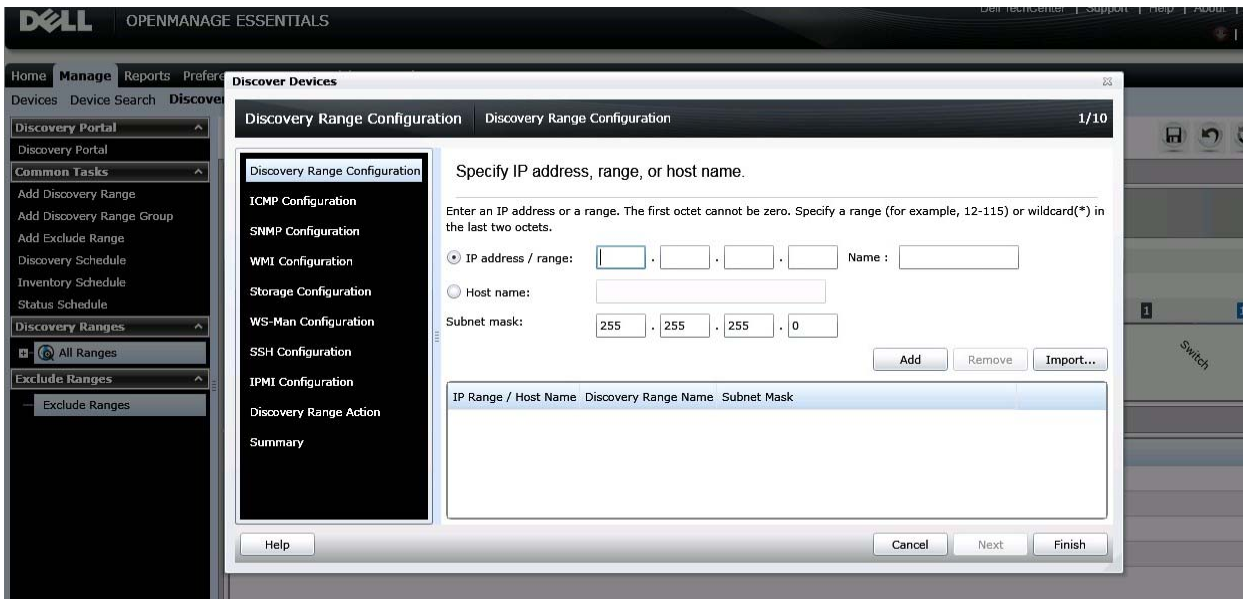


Figure 1 Discovery Range Wizard

- iii. Specify the IP ranges of the devices in the environment. The following are examples of valid IP ranges that you can provide.

<b>IP Range</b>	<b>193.109.112.*</b>
	<b>193.104.20-40.*</b>
	<b>192.168.*.*</b>
	<b>192.168.2-51.3-91</b>
	<b>193.109.112.45-99</b>
<b>Hostname</b>	<b>WIN-17L2JS8</b>
<b>Single IP</b>	<b>193.109.112.99</b>

Figure 2 Sample IP ranges

Additionally, an Import functionality provided in OpenManage Essentials helps with importing a Discovery Range which is defined in a .csv file format, as shown in Figure 2. The maximum numbers of devices that can be imported using this method is 500.

Name	Type	Data
1750-win-r03-03	Host (A)	10.94.172.180
1750-win-r04-02	Host (A)	10.94.172.184
1850-win-r04-05	Host (A)	10.94.172.179
2650-win-r01-04	Host (A)	10.94.172.193
2800-W2K3	Host (A)	10.94.168.32
2850-win-r01-03	Host (A)	10.94.161.71
2900-win-r03-07	Host (A)	10.94.161.72
2970-esx	Host (A)	10.94.168.203
4600-WIN-R04-14	Host (A)	10.94.172.168

Figure 3 Sample .csv file

The following example demonstrates adding a discovery range using SNMP protocol with the Add Discovery Range Wizard.

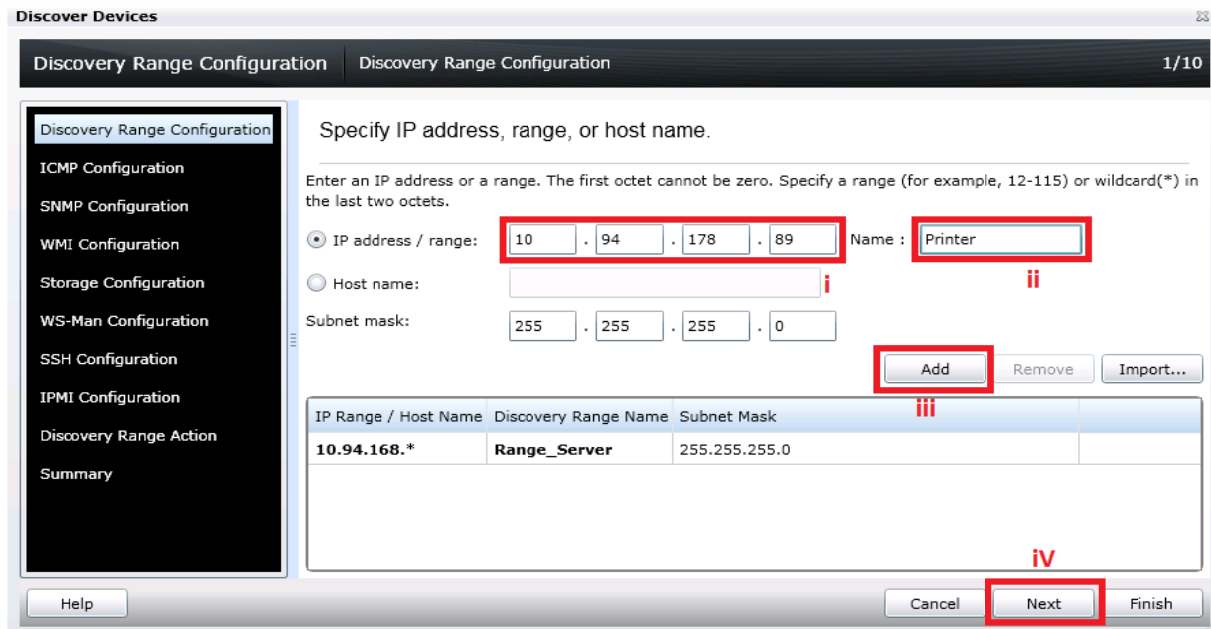


Figure 4 Specifying an IP range

- i. In the **IP address/range** field, type the IP address range.
- ii. In the **Name** field, provide a range name (optional).
- iii. Click **Add**.
- iv. Repeat step i to step iii, to add more discovery ranges.
- v. Click **Next** to proceed.





## 2 Discovering PowerConnect Ethernet switches

To discover PowerConnect Ethernet switches:

- i. In the **IP address/range** field, type the IP address range.
- ii. In the **Name** field, provide a range name (optional).
- iii. Click **Add**.

NOTE: Repeat step i to step iii, to add more discovery ranges.

- iv. Click **Next** to proceed.

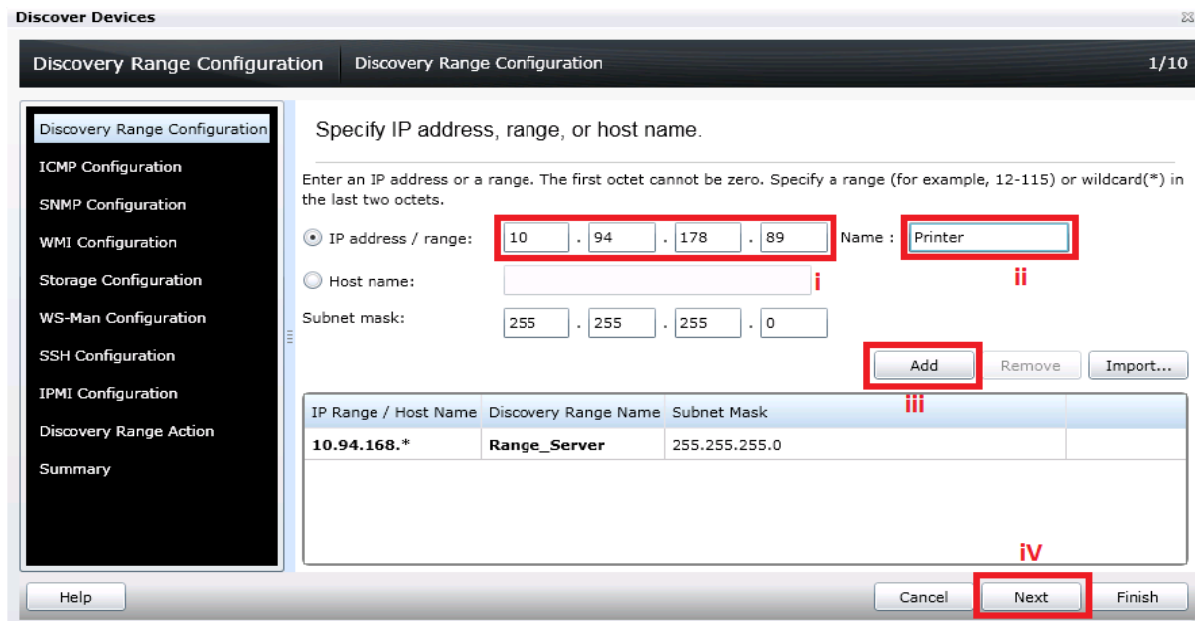


Figure 5 Specifying an IP range

- v. In the **SNMP Configuration** screen, select the **Enable SNMP discovery** option.
- vi. Type the community name in the **Get community** field.

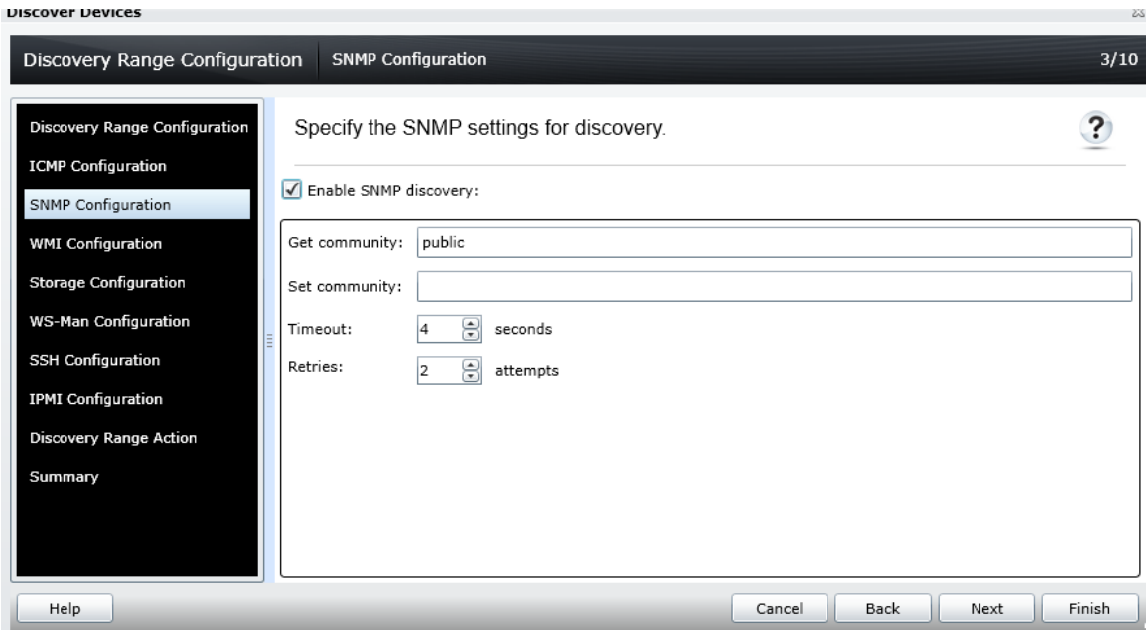


Figure 6 SNMP configuration screen

- vii. Click **Next** to proceed with the default settings until the **Discovery Range Action** screen.
- viii. In the **Discovery Range Action** screen, select one of the options, and click **Finish**.

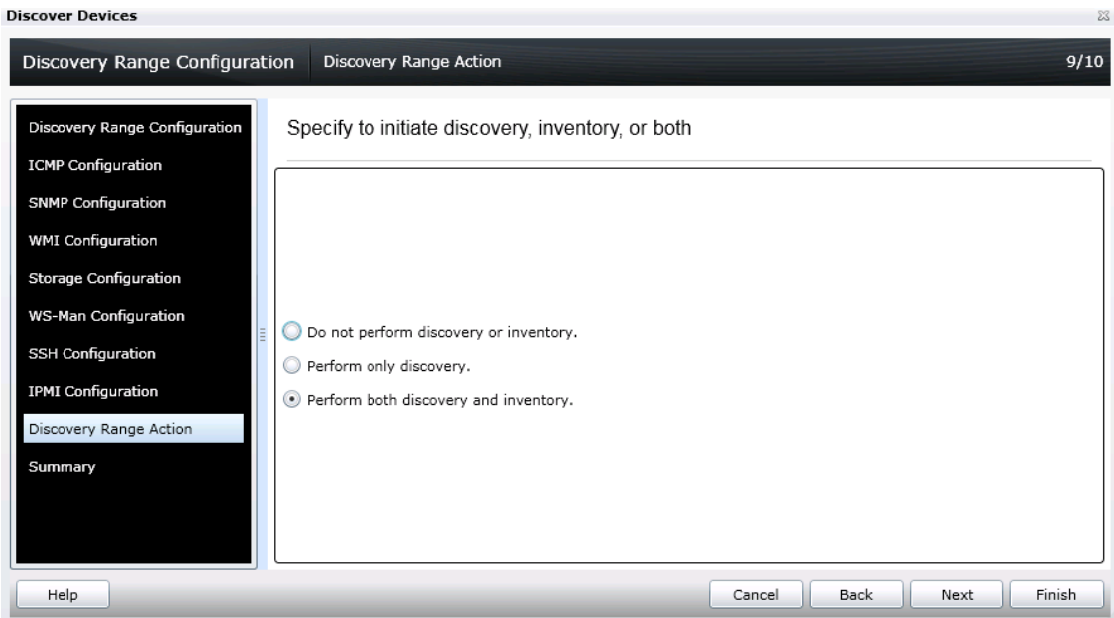


Figure 7 Discovery Range Action

The PowerConnect device you discovered is displayed in the device tree in OpenManage Essentials.



## 3 Configuring SupportAssist

After successful discovery of the PowerConnect Ethernet switch in OpenManage Essentials, the **Devices** tab in SupportAssist displays the PowerConnect Ethernet switch.

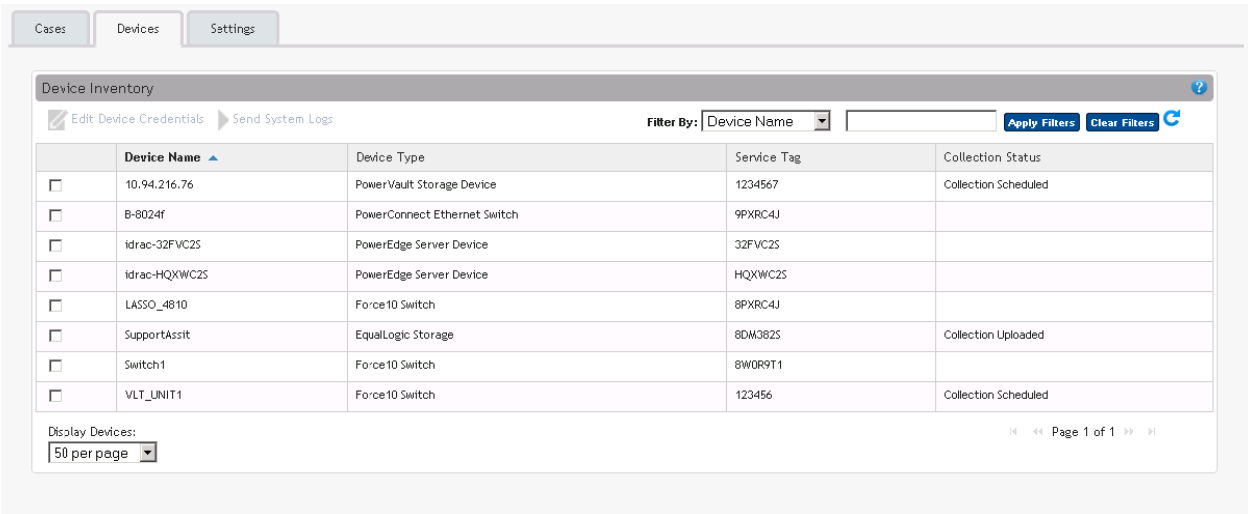


Figure 8 Devices tab

### 3.1 Default Credentials

SupportAssist runs the appropriate collection tools and gathers the system logs from OpenManage Essentials-managed Dell server, storage, and networking devices. To run the collection tools on your PowerConnect Ethernet switches, you must configure SupportAssist with the Administrator credentials of the PowerConnect Ethernet switch.

To provide the Administrator credentials:

**NOTE:** The **Settings** tab is accessible only if you are logged on as a member of the OpenManage Essentials Administrators or Power Users group.

- i. Navigate to the **Settings** tab. By default, the **System Logs** page is displayed.
- ii. In the **System Logs** page, under **Edit Device Credentials**, select the **Device Type** as **Switch**.
- iii. In the **Credential Type** list, select **PowerConnect**.



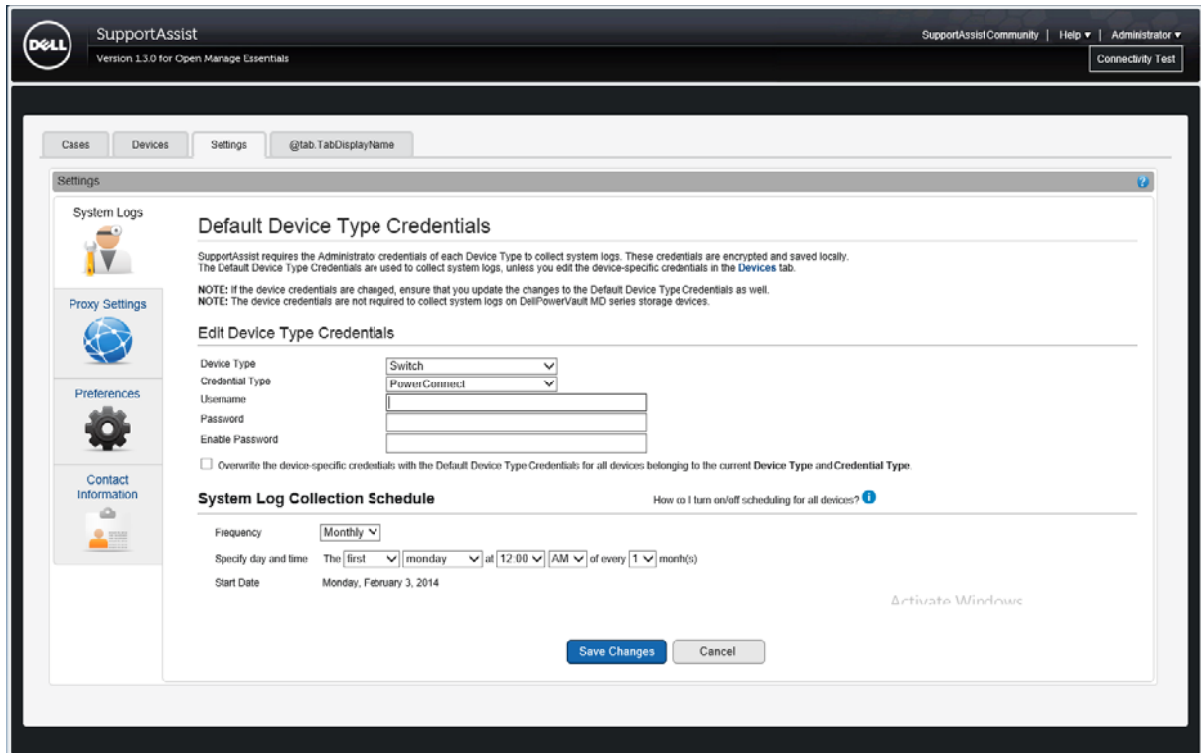


Figure 9 Providing the device credentials

NOTE: For PowerConnect Ethernet switches, the **Username**, **Password**, and **Enable Password** fields are optional. However, information must be provided for these fields if the PowerConnect Ethernet switch is configured with these details.

- iv. If applicable provide the username, password, and enable password in the appropriate fields.
- v. Click **Save**.

## 3.2 Custom Credentials

If you have more than one PowerConnect device, and the Administrator credentials of a particular PowerConnect device is different, you can configure the credentials for that PowerConnect device through the **Devices** tab.

To provide custom credentials:

- i. In the **Devices** tab, select the appropriate PowerConnect device.



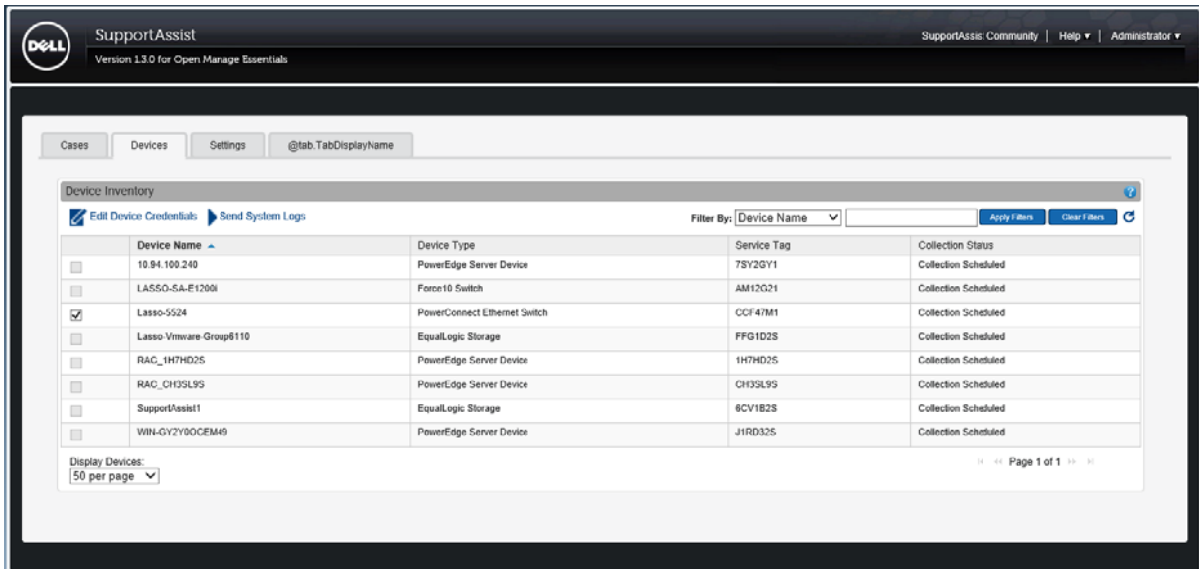


Figure 10 Devices tab

- ii. Click **Edit Device Credentials**.

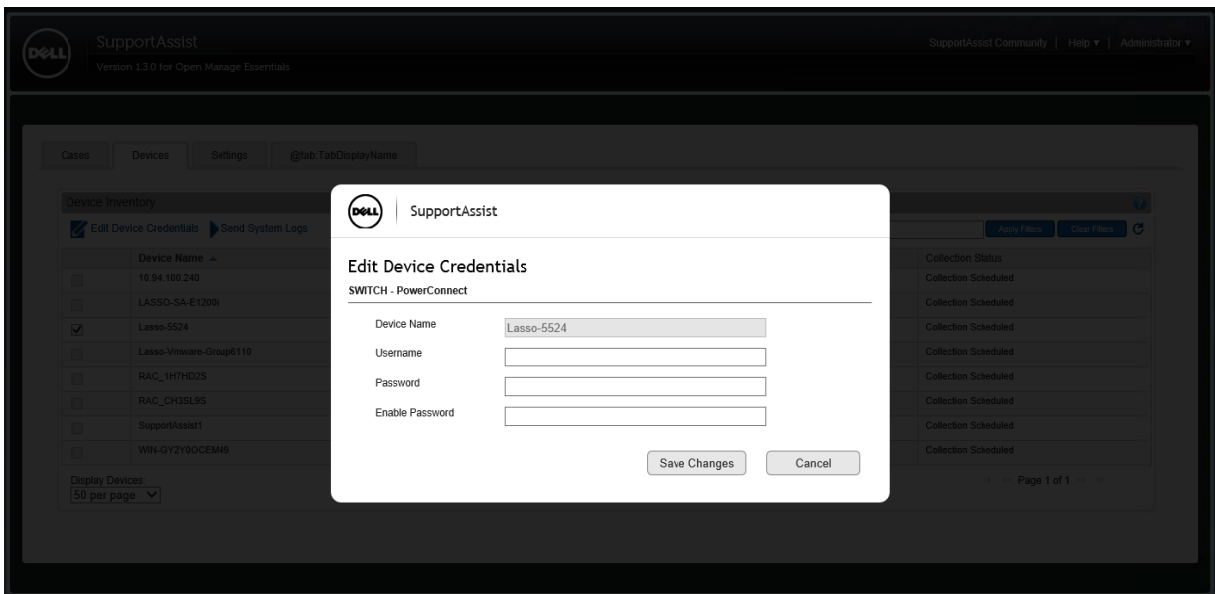


Figure 11 Edit Device Credentials screen

- iii. In the **Edit Device Credentials** screen, provide the **Username**, **Password**, and **Enable Password** as appropriate.
- iv. Click **Save Changes**.
- v. At the confirmation prompt, click **Yes**.



## 4 Alerts in OpenManage Essentials

Dell OpenManage Essentials administrators can monitor the health of discovered assets through a centralized, easy-to-use dashboard and through automated, custom alerts. The dashboard provides an at-a-glance view and a scoreboard displaying the health and well-being of the infrastructure.

### 4.1 Alert threshold

The alert threshold specifies under what conditions the alert should cause a support case to be created (or appended). The syntax resembles a programming method and optionally may take additional arguments to refine its behavior.

Currently there are two possible values:

- FirstMatch() – The case should be created/appended each time this alert is detected.
- Occurs (count,duration) – The case should be created/appended only when the alert has occurred so many times a specified duration.

The duration argument of the Occurs threshold defines a relative time in days, hours, minutes, and seconds and is formatted as dd-hh:mm:ss. The following are some examples of the Occurs threshold and their descriptions

Table 1 Examples of Occurs threshold

Example	Description
Occurs (5,1-00:00:00)	Create/append a case if the alert occurs 5 or more times within the previous 1 day
Occurs (3,0-05:00:00)	Create/append case if the alert occurs 3 or more times within the previous 5 hours
Occurs (8,1-12:00:00)	Create/append case if the alert occurs 8 or more times within the previous day and a half

Valid duration values – Days: 0 to 365, Hours: 0 to 23, Minutes: 0 to 59, Seconds: 0 to 59

Policies which specify the Occurs () threshold instruct the SupportAssist server to retain the timestamps of each alert. With each new alert occurrence, the SupportAssist server evaluates if the number of alerts within the duration exceeds the count, and if so, creates/appends the case. The timestamps are discarded to ensure the Occurs () threshold will not append the case until an entirely new set of alerts are received which fulfills the criteria.



Table 2 Examples of Policy file details

Policy Property	Description	Example
clientType	The type of client reporting the alert	"OME"
eventSourceType	The source of the alert	".1.3.6.1.4.1.674.10892.1"
trapId	The trap identifier	"1053"
eventId	The event identifier	(null)
severity	Severity of the alert	"MINOR"
description	Description of the alert	"Temperature probe has detected a warning value."
autoCase	Indicates if the alert should be processed	true
alertThreshold	Policy filter when the case is created	"Occurs (2,1-00:00:00)"
deltaSeverity	Severity code passed to delta	"3"

Only alerts with Enterprise OID .1.3.6.1.4.1.674.10895 for Client Type OME will be processed as alerts from PowerConnect Ethernet switches.

SupportAssist processes all the alerts with PowerConnect OIDs, but only some specified alerts are considered to create a case (Service Requests or SR) provided they have Auto Case as "Yes" as shown in the following policy table .

Table 3 Policy table with threshold

Name	Description	TrapId	EventId	Severity	Autocase	Alertthreshold	Resolution type
.1.3.6.1.4.1.674.10895	PowerConnect	500	(null)	Critical	1	Occurs(3,00-01:00:00)	FA
.1.3.6.1.4.1.674.10895	PowerConnect	580	(null)	Minor	1	Occurs(3,00-01:00:00)	FA
.1.3.6.1.4.1.674.10895	PowerConnect	750	(null)	Minor	1	Occurs(3,00-01:00:00)	FA
.1.3.6.1.4.1.674.10895	PowerConnect	730	(null)	Informational	1	Occurs(3,00-01:00:00)	FA
.1.3.6.1.4.1.674.10895	PowerConnect	660	(null)	Major	1	Occurs(3,00-01:00:00)	FA
.1.3.6.1.4.1.674.10895	PowerConnect	640	(null)	Minor	1	FirstMatch()	FA
.1.3.6.1.4.1.674.10895	PowerConnect	590	(null)	Informational	1	Occurs(3,00-01:00:00)	FA
.1.3.6.1.4.1.674.10895	PowerConnect	1030	(null)	Minor	1	Occurs(3,00-01:00:00)	FA
.1.3.6.1.4.1.674.10895	PowerConnect	1020	(null)	Informational	1	Occurs(5,00-01:00:00)	FA
.1.3.6.1.4.1.674.10895	PowerConnect	980	(null)	Informational	1	Occurs(3,00-01:00:00)	FA
.1.3.6.1.4.1.674.10895	PowerConnect	900	(null)	Major	1	FirstMatch()	FA



## 5 Case creation and execution of the collection tool

SupportAssist processes all alerts from OpenManage Essentials, but a support case is created only if:

- The policies qualify the alert for a support case creation.
- SupportAssist is configured to automatically generate support cases.

Once the support case is created for an PowerConnect device, the corresponding collection tool (Dell Lasso) is invoked, and the system log collection is generated and uploaded to Dell.

**NOTE:** For devices covered under Basic Support service contract type, the support case is not created, but the collection tools are invoked.



The screenshot shows the 'Cases' tab in the SupportAssist interface. At the top, there are navigation tabs for 'Cases', 'Devices', and 'Settings'. Below this is a 'Case List' section with a search filter set to 'Case Number'. A table displays one case with the following details:

Case Status	Case Number	Case Title	Collection Status	Service Contract	Device Type	Service Tag	Date Opened
Submitted	874379810	WCG: OME   PS   FA   PowerEdge M905   Microsoft Windows Server 2008, Enterprise x64 Edition   CRITICAL-Cooling device sensor has detected a failure value.	Collection Scheduled	ProSupport	Switch	151324J	4/11/2013 4:04 AM

Below the table, there is a 'Display Cases:' dropdown menu set to '50 per page' and a pagination indicator showing 'Page 1 of 1'.

Figure 12 Support case created for a PowerConnect Ethernet switch



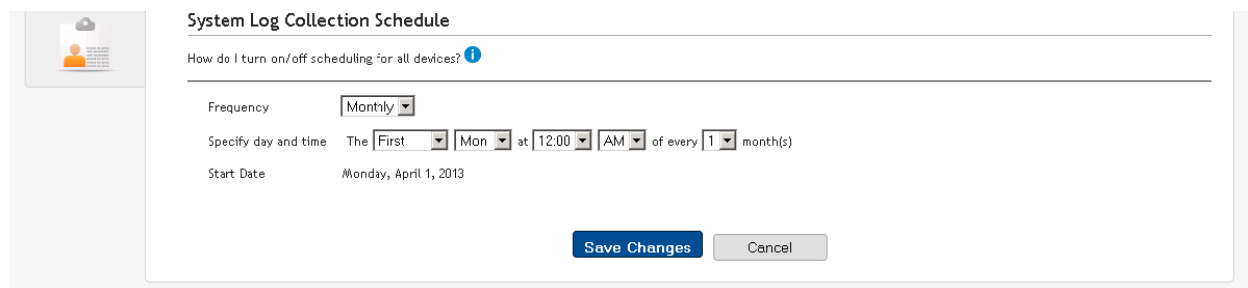


## 6 Configuring periodic collection

By default, SupportAssist generates the system log collection from PowerConnect Ethernet switches every month, and uploads the system log collection to Dell. You can modify the frequency at which the system log collection is generated as required.

To configure the periodic collection:

- i. Click the **Settings** tab.
- ii. Under **Edit Device Type Credentials**, select **Device Type** as **Switch** and **Credential Type** as **PowerConnect**.
- iii. Under **System Log Collection Schedule**, select the frequency, date, and time as required.
- iv. Click **Save Changes**.



The screenshot shows the 'System Log Collection Schedule' configuration window. It includes a sidebar with a user icon and a main content area. The main area has a title 'System Log Collection Schedule' and a help link 'How do I turn on/off scheduling for all devices?'. Below this, there are three rows of configuration options: 'Frequency' set to 'Monthly', 'Specify day and time' set to 'The First Mon at 12:00 AM of every 1 month(s)', and 'Start Date' set to 'Monday, April 1, 2013'. At the bottom right, there are two buttons: 'Save Changes' (highlighted in blue) and 'Cancel'.

Figure 13 Configuring periodic collection

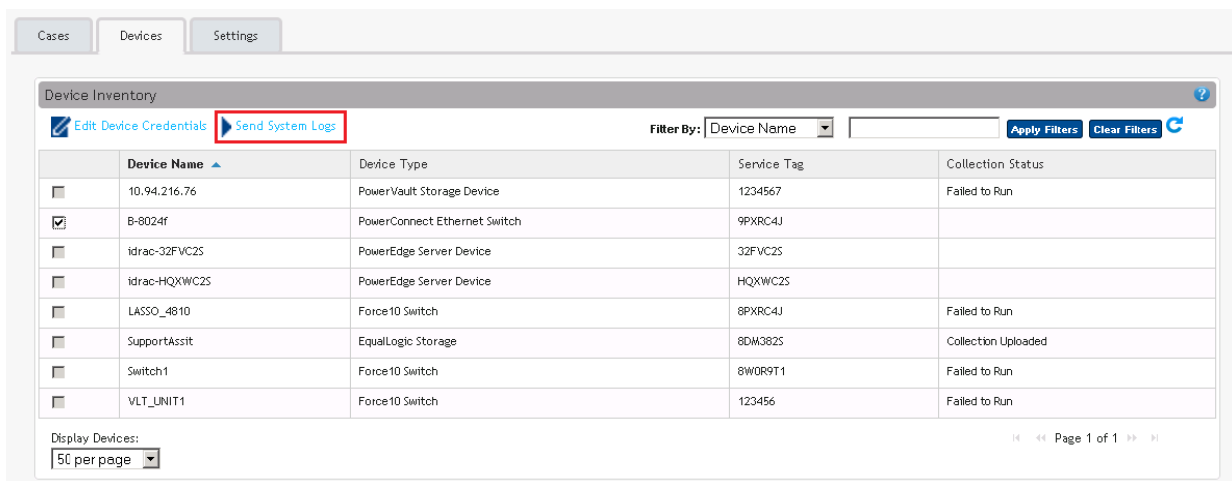
## 7 Sending system logs manually (collection on demand)

When a support case is opened or updated, the SupportAssist client, runs the collection tools on the devices that generated the alerts, and then uploads the system logs to Dell. In certain conditions, if required by Dell technical support, you may be required to manually collect the system logs and send it to Dell.

To send the system logs manually:

- i. Click the **Devices** tab.
- ii. Select a PowerConnect device in the **Device Inventory** table.
- iii. Click **Send System logs**.

The collection tool (Dell Lasso) is invoked and the generated system log collection is uploaded to Dell.



	Device Name	Device Type	Service Tag	Collection Status
<input type="checkbox"/>	10.94.216.76	PowerVault Storage Device	1234567	Failed to Run
<input checked="" type="checkbox"/>	B-8024f	PowerConnect Ethernet Switch	9PXRC4J	
<input type="checkbox"/>	Idrac-32FVC2S	PowerEdge Server Device	32FVC2S	
<input type="checkbox"/>	Idrac-HQXWC2S	PowerEdge Server Device	HQXWC2S	
<input type="checkbox"/>	LASSO_4810	Force10 Switch	8PXRC4J	Failed to Run
<input type="checkbox"/>	SupportAssist	EqualLogic Storage	8DM382S	Collection Uploaded
<input type="checkbox"/>	Switch1	Force10 Switch	8W0R9T1	Failed to Run
<input type="checkbox"/>	VLT_UNIT1	Force10 Switch	123456	Failed to Run

Figure 14 Sending system logs manually

## Conclusion

Dell SupportAssist identifies hardware failures on supported devices quickly and more accurately. It automates and streamlines the support process steps without much interaction from your side. With SupportAssist, integrated with OpenManage Essentials, you have a single systems management console to remotely monitor and manage your environment, giving you instant insight into how your systems are performing at all times.

